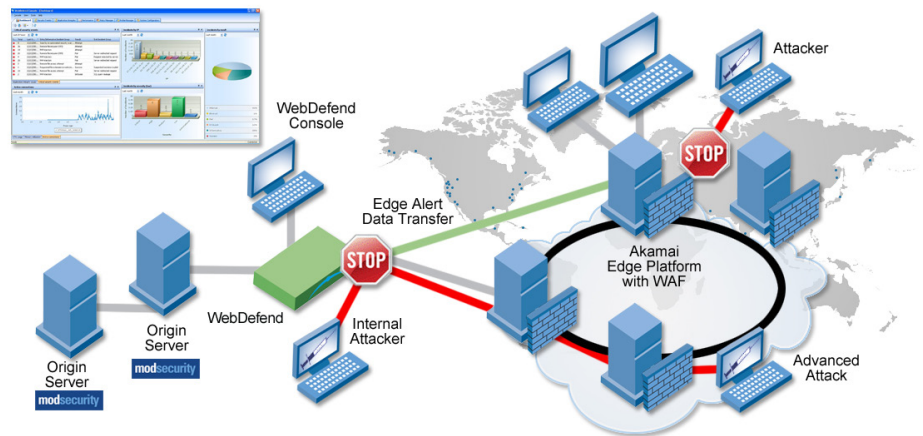




WEBDEFEND GLOBAL EVENT MANAGER (GEM) BETA PROGRAM

Breach is testing the WebDefend Global Event Manager solution that will combine and render Akamai Web Application Firewall Service events, Mod Security events and Breach WebDefend events. In coordination with your organization's evaluation of the Akamai Web Application Firewall service Breach proposes a simultaneous beta test of its WebDefend GEM solution.



The solution is designed to maximize the value of your Akamai Web Application Firewall service and your origin-based WAF solutions, including Mod Security, and help your organization make defense-in-depth protection for web applications operational by:

1. Facilitating test and evaluation of Akamai Web Application Firewall service rules configurations - if your organization deploys Mod Security or WebDefend sensors to analyze the same traffic as the Akamai Web Application Firewall service when it is in alert only mode (not configured for blocking), you will be able to use the consolidated monitoring solution in the WebDefend Manager appliance to validate your Akamai rules configurations by comparing the cloud and origin events in a single console in near real-time.
2. Providing continued near real-time visibility into Akamai Web Application Firewall service activity once the Akamai Web Application Firewall service is configured to take blocking actions in the cloud. Akamai's Web Application Firewall service portal provides periodic reporting but not real-time event information. Your organization can separately consume the near real-time event feed from Akamai in order to have instant knowledge of when the Akamai is blocking web activity. The consolidated monitoring solution will present and alert according to your policy on Akamai events gathered from Akamai's near real-time event feed.
3. Providing holistic web application security and integrity monitoring and event management across cloud-based and origin-based controls using WebDefend's best-of-breed management console.
4. Organizing and presenting the information necessary to make defense-in-depth security tactics operational at the application layer. A tool to help your organization decide what activity should be analyzed or blocked in the cloud versus at the origin on a rule-by-rule and/or IP-by-IP basis.

BACKGROUND

Breach has partnered with Akamai to support development and sale of the Akamai Web Application Firewall service. Breach is the developer of both the open source Mod Security WAF, the world's most widely deployed WAF, and WebDefend, a commercially licensed third generation web application security solution that is widely considered best-of-breed in the industry.

Akamai will make near real-time security event information available to customers of the Akamai Web Application Firewall service. This event information (known as the "W-line") is produced by the individual systems that compose the Akamai Edge Platform. It provides basic security event information related to the Akamai Web Application Firewall service including:

1. Time / Date
2. Edge Platform
3. WAF rules fired
4. IP address of client system

The W-line can be consumed by remote or origin-based systems to monitor and manage WAF Service security events in a near real-time manner. The WebDefend Global Event Manager allows customers to compare these basic cloud events with detailed events - including full request and response bodies and detailed analysis - generated by WebDefend and ModSecurity sensors deployed in the data center at the origin. With this enhanced real-time visibility, organizations can make rapid decisions about what traffic to block and where across their cloud and origin based infrastructures.

PROPOSED BETA TESTING

Breach proposes that your organization beta test the WebDefend GEM upon beta availability in December 2009. Breach will provide your organization with a WebDefend management appliance for evaluation purposes and the necessary support to integrate your Mod Security and Akamai Web Application Firewall service events during the course of the beta test. At your option, Breach will also provide a WebDefend sensor appliance for a no-cost evaluation. The optional sensor appliance will allow you to take advantage of the unmatched visibility into application layer security and health that differentiates WebDefend from other origin WAF solutions. With your organization's permission, Breach will work in close coordination with the Akamai account team to support the beta testing. We will require an understanding of your Akamai Web Application Firewall service deployment and any Mod Security deployment that you wish to integrate. Finally, we will require access, in a manner suitable to your organization, to the solution and the log files during the course of the beta test.

ABOUT BREACH SECURITY™

Breach Security, Inc. is the leading provider of real-time, continuous web application security that protects sensitive web-based information. Breach Security's products protect web applications from hacking attacks and data leakage and ensure applications operate as intended. The company's products are trusted by thousands of organizations around the world, including leaders in finance, healthcare, ecommerce, travel and government.

For more information, contact your authorized Breach Security representative or visit www.breach.com.



Breach Security, Inc.
Corporate Headquarters

2141 Palomar Airport Road, #200 | Carlsbad, CA 92011 | USA
tel: (760) 268-1924 | toll-free: (866) 205-7032
fax: (760) 454-1746 | www.breach.com